

# **“Simpl” Implant Abutments** with Atlantis CAD CAM Technology



**Don't change your implant...  
change your abutment.**

**See more patients in less time...  
and save money in the process!**

**See how we've made it "Simpl."**



# Making Implant Restorations “Simpl”

## CAD CAM Abutments

### Simplified Protocol



# Making Implant Restorations “Simpl”

- Atlantis CAD CAM Abutments reduce chair time, promote tissue healing and guarantee fit.
- Town & Country has incorporated these abutments into a complete restorative package, called “Simpl.”
- “Simpl” makes it easy for you to plan, price and place implant restorations.



# Making Implant Restorations “Simple”



Atlantis CAD CAM Abutments are compatible with virtually every implant system, including:

- 3i Micro, Miniplant, Standard, Wide, Certain
- Astra ST
- BioHorizons
- Innova Endopore
- Lifecore
- Nobel Biocare, Branemark, SteriOss Replace, Select
- Sterngold-ImplaMed
- Straumann RN
- Zimmer Screw-Vent, Spline, SwissPlus
- and others

# Making Implant Restorations “Simpl”

## *0 Parts, 1 Price, 2 Weeks*



**Our “Simpl” package includes:**

- Soft tissue model
- Analog
- Custom-milled Titanium Abutment
- Titanium abutment screw
- Abutment placement jig
- **One price of just \$379 per unit**

**PLUS...**

- Add the crown of your choice

# Making Implant Restorations “Simple”

## *Add the crown of your choice*



### **PFM:**

- Phoenix PFM
- NobleYellow, Premium Noble
- Captek, High Noble
- High Noble White
- High Noble Yellow
- Semi-Precious

### **All-Ceramic:**

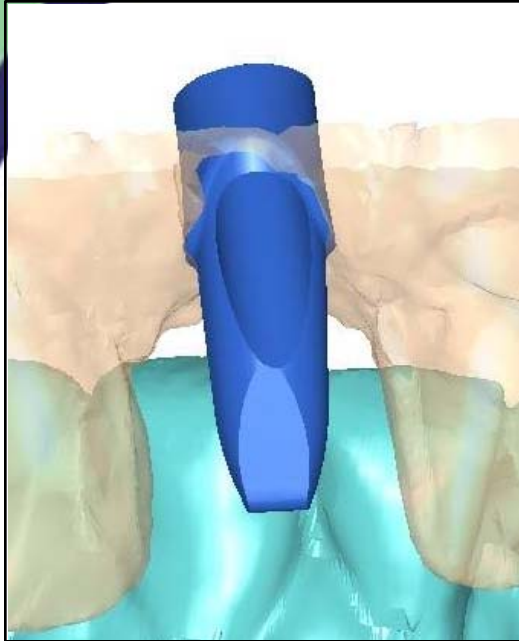
- Procera Alumina
- Procera Zirkon
- 3M Lava Zirconia
- Cercon Zirconia

**Making Implant Restorations “Simpl”**  
**CAD CAM Abutments**  
**Simplified Protocol**





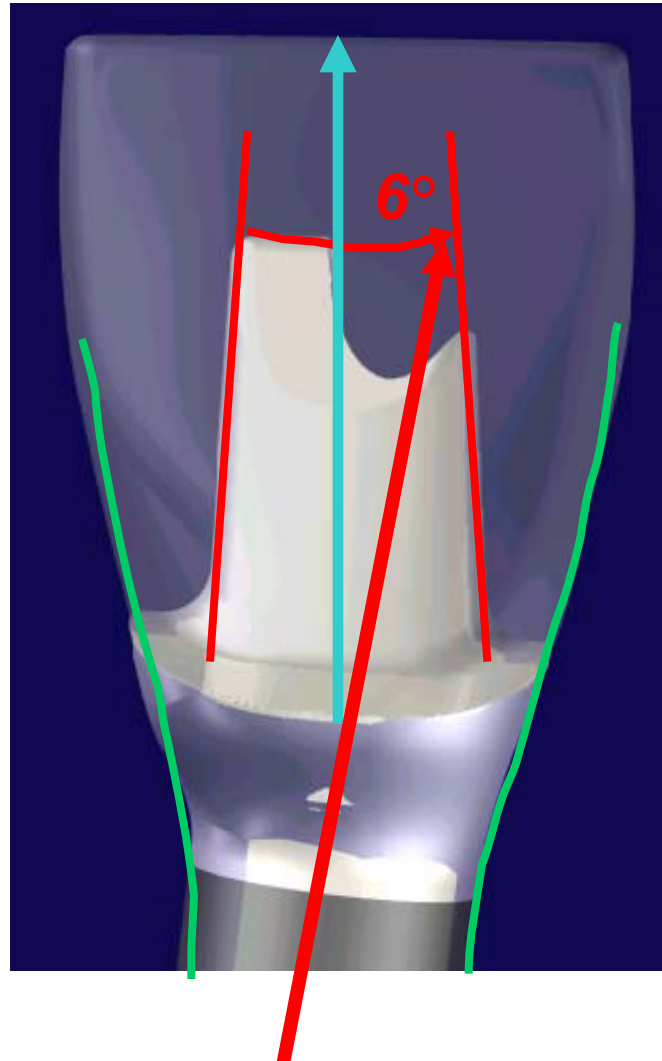
# What's a CAD CAM Abutment?



- Designed by computer, reviewed and approved by Town & Country senior technician
- Milled by computer for unsurpassed accuracy and precision
- Cut from medical-grade Titanium providing superior biocompatibility and best possible integration with implant fixture
- Over 40,000 abutments fabricated to-date

# What's a CAD CAM Abutment?

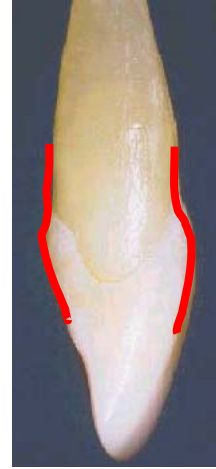
- Precision Milled from Titanium
- Perfect Emergence Profile
- Angled Implant Axis



- Straight Path of Insertion
- Correct Path of Insertion
- Ideal Coronal Preparation

# What's a CAD CAM Abutment?

- Shaped like a natural tooth
- Ideal emergence profile
- Compensates for clinical issues (angulation, reduced occlusal height)
- No stock abutments to inventory
- Reduce chair time to two restorative patient visits



*Angled Implant Axis*



# What's a "GEMINI" Abutment?



Computer  
Design



Primary  
Abutment



"Gemini"  
Duplicate

***A functionally identical abutment that decreases chair time for both surgeon and referring dentist.***

**Making Implant Restorations “Simpl”**  
**CAD CAM Abutments**  
**Simplified Protocol**



# Simplified Protocol

## Restorative Consult

- Take pre-op models for transfer jig and provisional
- Refer patient to your surgeon for a Simpl Implant using Atlantis Abutments

## Surgical Visit #1

- Place implant; take fixture level index
- Send index and case materials to Town & Country



- Design and machine Atlantis Titanium Abutment
- Return case to surgeon

## Surgical Visit #2

- Place Atlantis Abutment and provisional

## Restorative Visit #1

- Check tissue healing
- T&C makes final crown on Gemini duplicate abutment

## Restorative Visit #2

- Deliver final restoration

# Simplified Protocol

## *Pre-Operative Restorative Consultation*

- Pre-Operative Full-Mouth Impression
- Opposing model
- Bite Registration
- Shade Selection
- Specify temporization of choice



# Simplified Protocol

## *Surgical Visit 1*

- Place Implant
- Take Fixture Level Index
- Transfer jig available





## Simplified Protocol *Between Surgical Visits 1 and 2*



Atlantis creates a custom patient-specific abutment.



Insert provisional crown of your choice.

# Simplified Protocol

## *Surgical Visit 2*

*Place abutment*



*Cement provisional*



*Suture soft tissue*



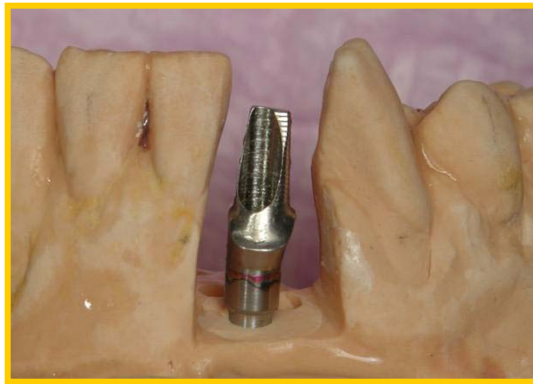
# Simplified Protocol

## *Restorative Visit 1*

*Check tissue health*



*Send Gemini to T&C for final crown*



*No Final Impression!*



# Simplified Protocol Restorative Visit 2

*Remove  
provisional*



*Cement final  
restoration*



*Final result*



# Why make your implants “Simpl”?

**Easy to plan – no parts required.**

**Easy to price – just \$379 plus crown.**

**Easy to place – just 2 restorative visits.**

**CAD CAM delivers unsurpassed accuracy and fit.**

**Titanium is the most bio-compatible material.**

**Ideal for all single, bridge and  
full-mouth reconstruction cases.**

**Surgeons use Atlantis Abutments  
instead of healing caps.**

# Why Town & Country?

**We are a leading 43-year-old crown & bridge dental lab.**

**The first Atlantis “Elite” Laboratory  
in the New York metropolitan area.**

**We have the confidence and expertise to  
handle any case...implant or otherwise.**

**We are fabricating close to 100 Atlantis units per month.  
No other laboratory comes close.**





TOWN & COUNTRY  
*A better dental lab*

---

Better Products • Better Service • Better Advice

[www.BetterDentalLab.com](http://www.BetterDentalLab.com)

1-800-925-8696

